



## 准备螺栓拉伸器(SSV)及配件报价所需的详细资料

**SCHAAF®**

Details required to prepare a quotation for Bolt Tensioning (SSV) and Accessoires

询价编号 Inquiry No.:

**SSV 用途** SSV is to be used for:

**SSV 使用场合** SSV is to be used on:

特殊问题或要求 (操作条件) Special problems / requirements (operating conditions):

### Technical Data

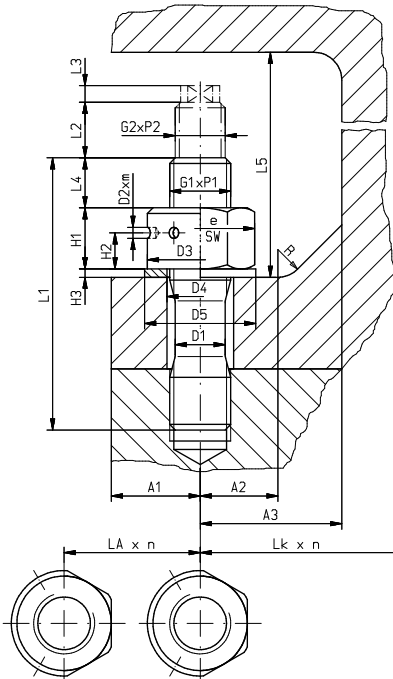
- 请说明所填写数据的计量单位 Please quote SI unit
- 对于不同的安装位置, 请附上草图或局部图

For different installation positions, please attach a sketch or cut-away drawing

- 如果该 SSV 还用于不同尺寸的螺纹, 请填写单独的表格

If SSVs are also to be used with threads of different dimensions, fill in separate sheets

- 要求的 SSV 数量 Desired quantity of SSV



|  |  |         |
|--|--|---------|
| 螺钉<br>Screw  | 锁紧螺纹 x 螺距 Locking thread x pitch       | G1 x P1 |
|  | 拉伸螺纹 x 螺距 Tensioning thread x pitch    | G2 x P2 |
|  | 螺柱长度 Stud length                       | L1      |
|  | 拉伸螺纹长度 Tension thread length           | L2      |
|  | 耳轴长度 Trunnion length                   | L3      |
|  | 轴径 Shaft diameter                      | D1      |
|  | 螺柱材质 Stud material:                    |         |
| 螺母<br>Nut  | 对角宽度 Width across corners              | e       |
|  | 对边尺寸 Wrench size                       | SW      |
|  | 螺母直径 Nut diameter                      | D3      |
|  | 螺母高度 Nut height                        | H1      |
|  | 拨孔高度 Height of setting rod             | H2      |
|  | 拨杆直径 Diameter of setting rod           | D2      |
|  | 拨孔个数 Number of setting rod holes       | m       |
| 垫片<br>Washer   | 垫片内径 Inner washer diameter             | D4      |
|  | 垫片外径 Outer washer diameter             | D5      |
|  | 垫片厚度 Washer thickness                  | H3      |
| 安装位置<br>Installation position  | 螺母上突出的螺纹 Thread overhang over Nut      | L4      |
|  | 安装高度限制 Installation height limit       | L5      |
|  | 法兰圆角半径 Flange radius                   | R       |
|  | 到法兰边缘的距离 Distance from flange rim      | A1      |
|  | 到法兰内边的距离 Distance to inner flange rim  | A3      |
|  | 到半径的距离 Distance to radius              | A2      |
|  | 螺栓圆周的直径 Diameter of bolt circle        | Lk      |
|  | 螺栓数量 Number of screws                  | n       |
|  | 相邻螺栓最小间距 Minimum hole separation       | LA      |
|  | 每个螺栓的拉伸力 Pretensioning force per screw | F       |
| 法兰材质允许的最大表面压力<br>Max. permissible surface pressure of flange material              | P                                      |         |
| 可能的螺纹细节, 如, 标准和公差等级<br>Possible thread details, e. g. standard and tolerance class |  |         |

安装位置 Installation position  水平 horizontal  垂直 vertical  头顶 overhead  其他 other \_\_\_\_\_

是否需要提供高压泵 Pressure generator available:  否 no  是/最大压力 yes/max. pressure: \_\_\_\_\_

版本 Version: \_\_\_\_\_

截止日期 Deadlines: 联系人 Quotation requested by: \_\_\_\_\_ 要求发货日期 Desired delivery date: \_\_\_\_\_

公司 Company: \_\_\_\_\_ 电话 Telephone: \_\_\_\_\_

姓名 Name: \_\_\_\_\_ 传真 Fax: \_\_\_\_\_

部门 Dept.: \_\_\_\_\_ 电子邮件 E-Mail: \_\_\_\_\_

街道 Street: \_\_\_\_\_ 国家 Country: \_\_\_\_\_

地点和邮编 Post code, place: \_\_\_\_\_

**Fax reply: +86 (0)5 12 - 81 60 80 61 · E-Mail: info@schaaf.cn**

自1954年成立以来, SCHAAF一直致力于液压高压工具的研发与制造

