

MMDS

Mobile Mounting Documentation System

User-friendly – Flexible – Optimized for wind turbines



MMDS – 100% documented
High-quality bolting due to
process reliability.

MDS

PG 28

MMDS

Mobile Mounting Documentation System – Full data recording of residual bolt load, bolt elongation and flange compression

SCHAAF Bolt Tensioner, 2,500 bar working pressure with integrated wireless measuring functions.

GPS receiver for global tracking (Option)

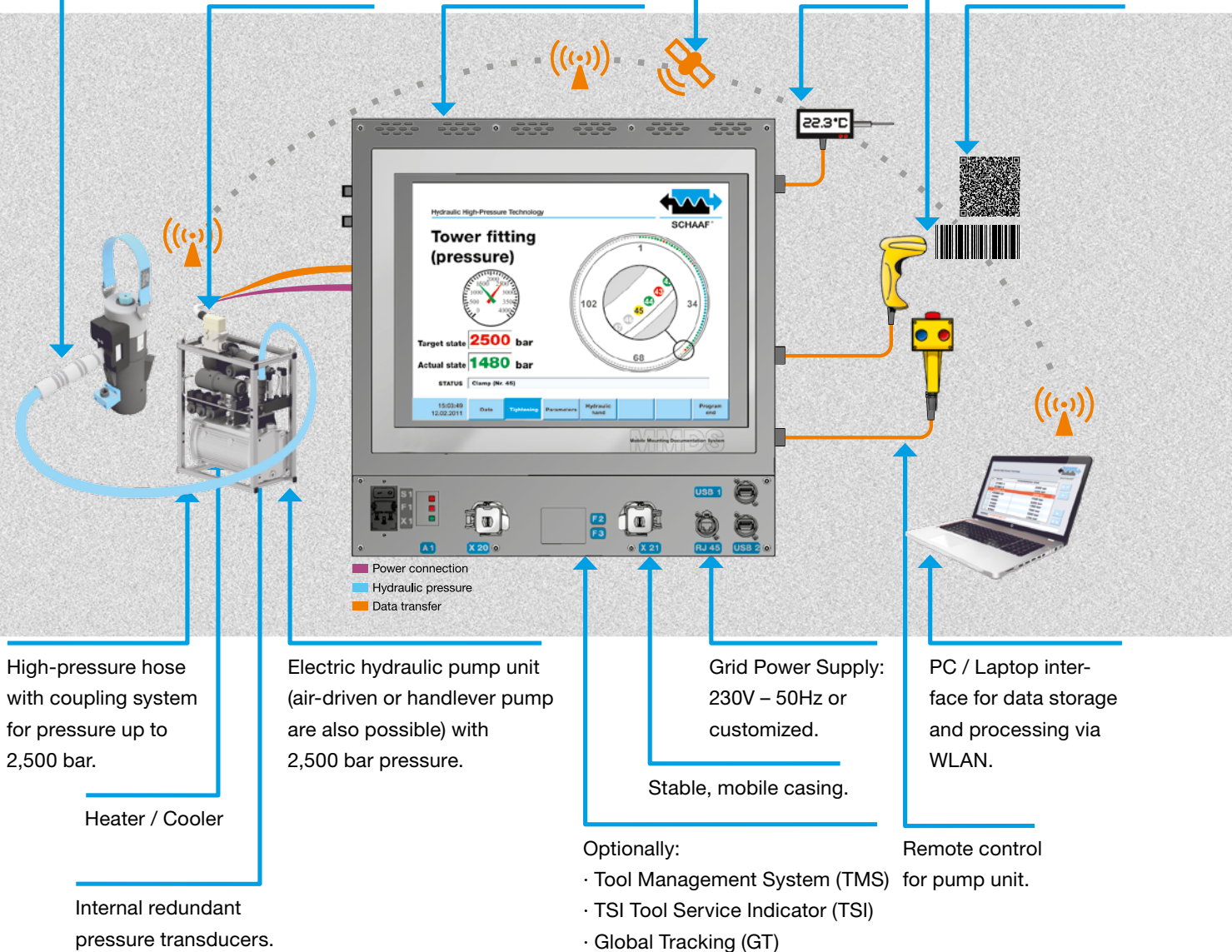
Scanner

Industrial connector to **MMDS**.

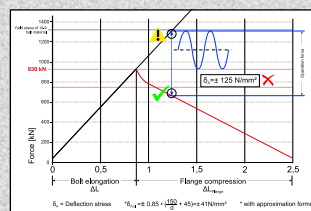
Basic **MMDS** with TFT Touch screen and IP65.

Temperature sensor.

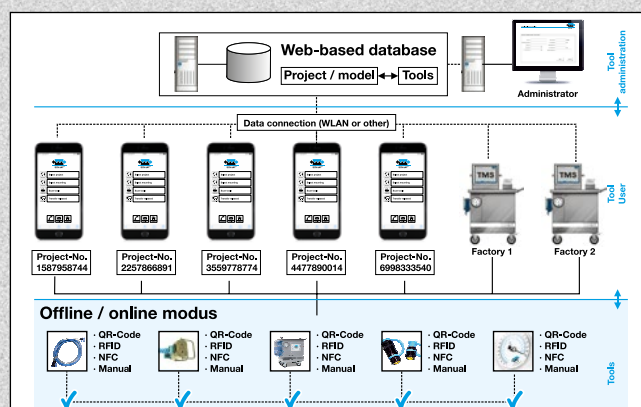
Barcode / QR for data acquisition (Application/ Tool).



- 100% documented quality of bolt connections
- Elongation and compression data can be recorded, displayed, memorized, printed and comprised with the integrated computer
- Increased work safety thanks to frequent pressure and elongation characteristic monitoring
- Simple, clear and comfortable user interface
- Data output on customer quality assurance sheets
- Almost unlimited capability for archiving of tightening procedures
- Tensioning programs and reports can be transferred via USB or LAN-Access
- Long service lifetime and user-friendly maintenance intervals
- Self-monitoring of the **MMDS**
- Can be operated in line current or battery mode
- Can be used with any kind of pump
- Portable aluminium case with handle bars

[illegible]

Individual printout of final and failed tensioning results



Example of a MMDS with TSI and TMS structure

[illegible]

Example of data storage design

Quality Assurance

All **MMDS** are checked for 100 % process security. During order handling, they are accompanied by ongoing quality assurance measures and supplied with extensive documentation.

Services

SCHAAF **MMDS** are user-friendly, reliable, and manufactured in accordance with the highest level of technical know-how. Our highly-motivated staff would be pleased to train your personnel, in situ or at our works, in the general handling and operation of the mobile and stationary control unit. In this way, all the process parameters can be entered optimally in order to achieve maximum process monitoring and safety. Of course, the **MMDS** are supplied ready for operation.

Software updates and upgrades

Tool Service Indicator (TSI):

For every single component of a tensioner the max allowed load cycle number is defined. When reaching a warning level a colorcode and suggested corresponding action is given to the operator. A digital logbook is created for every tool, where the tool's history is logged.

Tool Management System (TMS):

In combination with TMS the TSI functions are extended to also store additional data like existing pumps and hose types. All components that fulfill the technical requirement for the specific job are shown. Only approved tools can be used for the specific job.

Global Tracking (GT):

This update allows to track the place where a tool is scanned. This information ends up in the TMS database and can be viewed from a central server.

Complete solution from SCHAAF

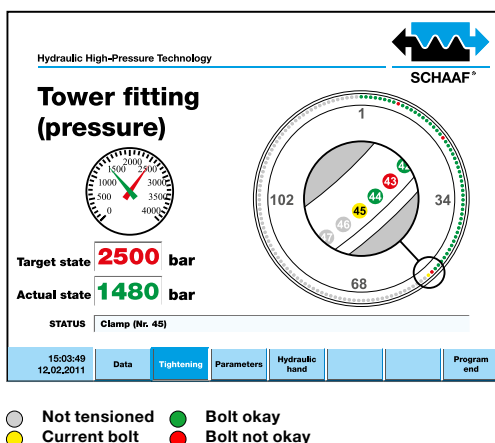
The accessories for the **MMDS** are aligned to the functions = 100 % system solution.

SCHAAF Accessories and additional product groups

- Bolt Tensioners (SSV)
- Hydraulic Nuts (HM)
- High-pressure generators:
manually operated, electric, or air-operated
- High-pressure hydraulic hoses
- Couplings, nipples, adapters and distributor blocks
for pressures up to 4,000 bar
- TTG Nuts and Bolts
- Online Bolt Load Monitoring (OBLM)

Certificates

- Specific test reports
- Certificates as per special customer requirements



Individual Monitoring design with TMS/TSI reports

SCHAAF GmbH & Co. KG

Bruesseler Allee 22
41812 Erkelenz - Germany

Telephone: +49 - 24 31 - 9 77 70-0
Fax: +49 - 24 31 - 9 77 70-77

E-Mail: info@schaaf-gmbh.com
Internet: www.schaaf-gmbh.com

